



# Spring Summer

SS24.1

  
PARAMI



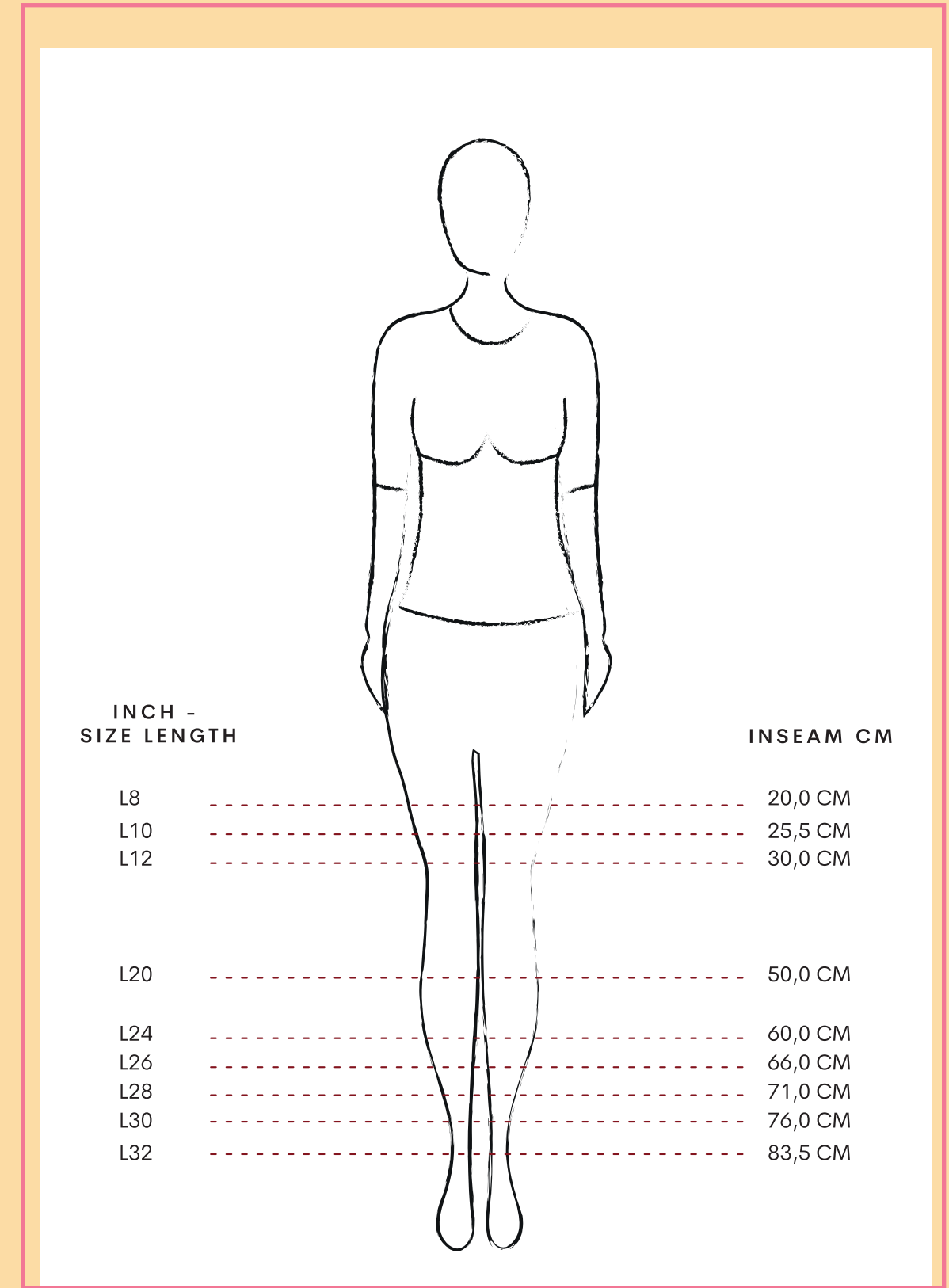
<b>SKINNY</b> .....	
CELINE	6
LIVIA	13
AMBER	14
CAPRI	17
<b>SLIM</b> .....	
ANGIE	19
KIM	22
<b>TAPERED</b> .....	
BOWIE	25
JILL	30
BILLY	32
<b>CIGARETTE</b> .....	
CATE	34
<b>LOOSE</b> .....	
BOBBY	35
<b>STRAIGHT</b> .....	
VAYEN	42
<b>BOOTCUT</b> .....	
VERA	45
<b>FLARE</b> .....	
JADE	46
<b>EXTRA FLARE</b> .....	
FAYE	48
<b>KICK FLARE</b> .....	
NOA	52
<b>WIDE LEG</b> .....	
MIRA	54
HANNAH	57
EVE	60
<b>SLIM CHINO</b> .....	
NOVA	63
<b>SPECIALS</b> .....	
MAE JACKET	64

# It's the fit

At Para Mi we have a timeless basic collection of standard fits in different fabrics, colours and washings. Every season this basic collection is supplemented with new, custom fits, new fabrics and surprising designs, always in excellent stretch quality and with a number of striking eye-catchers. All our designs are based on fit, style, quality and comfort.



Because of our exclusive focus on ladies trousers, we know what you expect from a pair of trousers. Therefore every pair of Para Mi trousers has a high waist and a comfortable fit, without losing it's fashionable look.





# Celine DAILY DENIMS L32

Article Number: SS241.212001

Composition: See sales app for composition and price of each washing!



SS241.212001 - D127 Clean Light Blue

Skinny fit



### Available washings



D127 Clean Light Blue



D133 Summer Indigo

# Celine TINTED DENIM L30/L32

Article Number: SS241.226001

Composition: 89% CO, 8% PES, 3% EA



SS241.212001 - 410 Soft Pink

Skinny fit



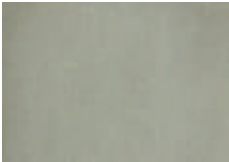
### Available colors



227 Beige



410 Soft Pink



612 Shade Green



# Celine CASUAL COTTON L32

Article Number: SS241.207001  
Composition: 97% CO, 3% EA



Skinny fit



### Available colors



301 Navy

425 Fuchsia



314 Royal Blue

628 Bright Green



230 Sand

638 Dark Cyan



401 Red

710 Vivid Violet

# Celine SATIN COTTON L32

Article Number: SS241.224001  
Composition: 56% LYC, 40% CO, 4% EA



Skinny fit



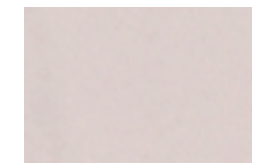
### Available colors



003 Off White



313 Light Blue



417 Mellow Rose



709 Light Purple

# Celine ajour SATIN COTTON L29

Article Number: SS241.224288  
Composition: 56% LYC, 40% CO, 4% EA

**Skinny fit**



SS241.224288 - 003 Off White



**Available color**



**003** Off White

# Celine elastic HEAVEN UNI L32

Article Number: SS241.001141  
Composition: 67% CO, 29% PES, 4% EA

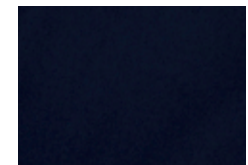
**Skinny fit**



SS241.001141 - 227 Beige



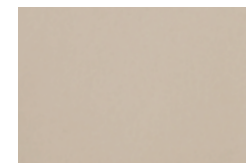
**Available colors**



**301** Navy



**003** Off White



**227** Beige



# Celine split SPRING PRINTS L29

Article Number: SS241.204092  
Composition: 62% CLY, 35% CO, 3% EA



Skimny fit

SS241.204092 - P132 Multi Color Flower



Available colors



P132 Multi Color Flower



P134 Leafs



P136 Neutral Safari

# Livia BLACK/WHITE JACQUARD L30

Article Number: SS241.140286  
Composition: 70% CO, 26% PA, 4% EA



Skimny fit

SS241.140286 - 001 Black



Available color



001 Black



# Amber DAILY DENIMS L28

Article Number: SS241.212003

Composition: See sales app for composition and price of each washing!

**Skinny fit**



SS241.212003 - Washing visible on photo is cancelled - only for style reference.



Only available in washing D42.



D42 Medium Used

# Amber COLOR DENIM L28

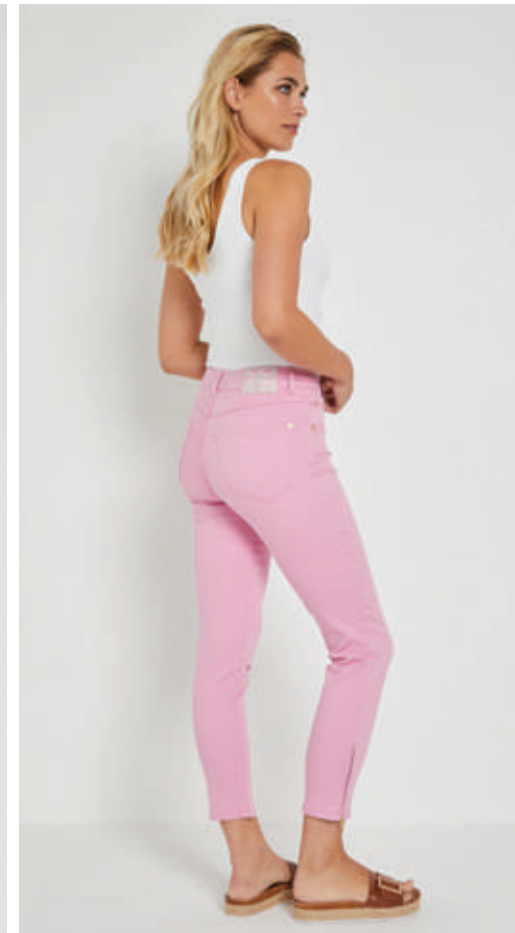
Article Number: SS241.005003

Composition: 91% CO, 6% PES, 3% EA

**Skinny fit**



SS241.005003 - 440 Rosebloom



Available colors



002 White



439 Bright Coral



440 Rosebloom

# Amber split HEAVEN UNI L28

Article Number: SS241.001216  
Composition: 67% CO, 29% PES, 4% EA

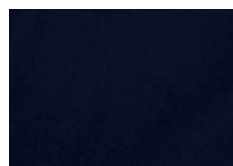
Skinny fit



SS241.001216 - 003 Off White



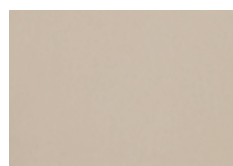
### Available colors



301 Navy



003 Off white



227 Beige

# Capri DAILY DENIMS L26

Article Number: SS241.212008  
Composition: See sales app for composition and price of each washing!

Skinny fit



SS241.212008 - D128 Clean Mid Blue



### Available washings



D127 Clean Light Blue



D128 Clean Mid Blue



# Capri CASUAL COTTON L26

Article Number: SS241.207008  
Composition: 97% CO, 3% EA

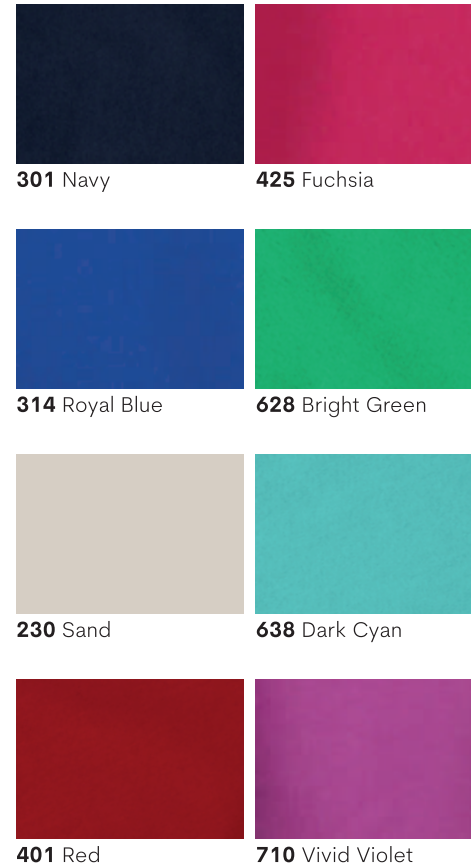


**Skinny fit**

SS241.207008 - 314 Royal Blue



### Available colors



# Angie fancy DAILY DENIMS L32

Article Number: SS241.212269  
Composition: See sales app for composition and price of each washing!

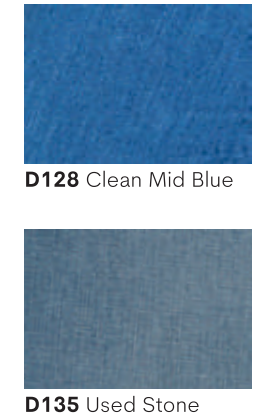


**Slim fit**

SS241.212269 - D135 Used Stone



### Available washings





# Angie fancy COLOR DENIM L32

Article Number: SS241.005269  
Composition: 91% CO, 6% PES, 3% EA



**Slim fit**

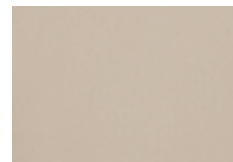
SS241.005269 - 227 Beige



### Available colors



002 White



227 Beige

# Angie fancy SATIN COTTON L32

Article Number: SS241.224269  
Composition: 56% LYC, 40% CO, 4% EA



**Slim fit**

SS241.224269 - 003 Off White



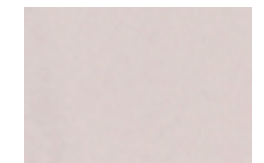
### Available colors



003 Off White



313 Light Blue



417 Mellow Rose



709 Light Purple

# Kim ajour DAILY DENIMS L29

Article Number: SS241.212250

Composition: See sales app for composition and price of each washing!



Slim fit

SS241.212250 - D42 Medium Used



Available washing



D42 Medium Used

# Kim embroidery COLOR DENIM L29

Article Number: SS241.005266

Composition: 91% CO, 6% PES, 3% EA



Slim fit

SS241.005266 - 439 Bright Coral



Available colors



002 White



439 Bright Coral



440 RoseBloom



637 Light Olive



# Kim elastic TWILL JERSEY L29

Article Number: SS241.220228  
Composition: 95% PES, 5% EA

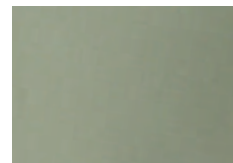


**Slim fit**

SS241.220228 - 637 Light Olive



Available color



637 Light Olive

# Bowie destroy DAILY DENIMS L30

Article Number: SS241.212289  
Composition: See sales app for composition and price of each washing!

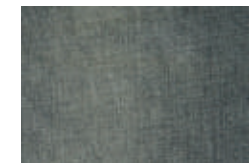


**Tapered fit**

SS241.212289 - D140 Grey Vintage



Available washing



D140 Grey Vintage



# Bowie DAILY DENIMS L30

Article Number: SS241.212244

Composition: See sales app for composition and price of each washing!

Tapered fit



SS241.212244 - D136 Light Vintage



### Available washings



D42 Medium Used



D134 Smokey Blue



D136 Light Vintage

# Bowie COLOR DENIM L30

Article Number: SS241.005244

Composition: 91% CO, 6% PES, 3% EA

Tapered fit



SS241.005244 - 637 Light Olive



### Available colors



003 Off White



439 Bright Coral



440 RoseBloom



637 Light Olive

# Bowie belt DAILY DENIMS L30

Article Number: SS241.212259

Composition: See sales app for composition and price of each washing!



Available washing



D42 Medium Used

# Bowie belt MORELLA L30

Article Number: SS241.223259

Composition: 64% CO, 33% CV, 3% EA



Available colors



637 Light Olive



705 Purple



# Jill cargo MORELLA L29

Article Number: SS241.223245  
Composition: 64% CO, 33% CV, 3% EA

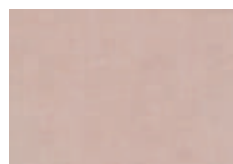
Tapered fit



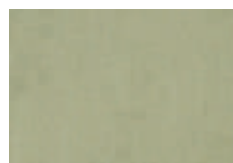
SSS241.223245 - 410 Soft Pink



Available colors



410 Soft Pink



637 Light Olive

# Jill cargo CASUAL COTTON L29

Article Number: SS241.207245  
Composition: 97% CO, 3% EA

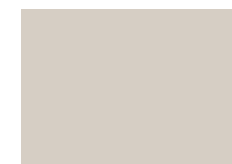
Tapered fit



SSS241.207245 - 230 Sand



Available color



230 Sand



# Billy DAILY DENIMS L28

Article Number: SS241.212222

Composition: See sales app for composition and price of each washing!

Tapered fit



SS241.212222 - D42 Medium Used



Available washing



D42 Medium Used

# Billy MORELLA L28

Article Number: SS241.223222

Composition: 64% CO, 33% CV, 3% EA

Tapered fit



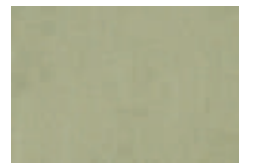
SS241.223222 - 410 Soft Pink



Available Colors



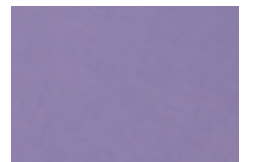
410 Soft Pink



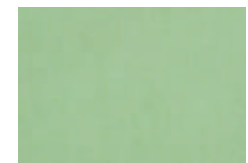
637 Light Olive



441 Sugar Pink



705 Purple



629 Bright Mint

# Cate SATIN COTTON L29

Article Number: SS241.224274  
Composition: 56% LYC, 40% CO, 4% EA

Cigarette fit



SS241.224274 - 313 Light Blue



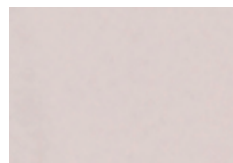
### Available colors



003 Off White



313 Light Blue



417 Mellow Rose



709 Light Purple

# Bobby DAILY DENIMS L30

Article Number: SS241.212091  
Composition: See sales app for composition and price of each washing!

Loose fit



SS241.212091 - P133 Paisley



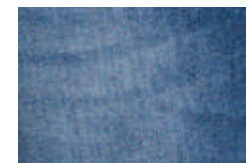
### Available washings



D16 Used Light Blue



D42 Medium Used



D137 Dark Vintage



P133 Paisley



# Bobby COLOR DENIM L30

Article Number: SS241.005091  
Composition: 91% CO, 6% PES, 3% EA

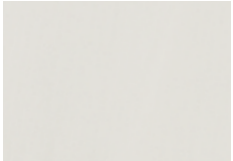

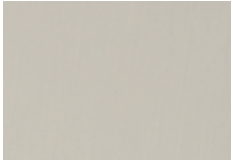

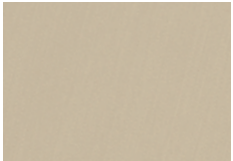



Loose fit

SS241.005091 - 439 Bright Coral



Available colors

	
002 White	439 Bright Coral
	
003 Off White	440 Rosebloom
	
227 Beige	637 Light Olive

# Bobby embroidery COLOR DENIM L30

Article Number: SS241.005243  
Composition: 91% CO, 6% PES, 3% EA



Loose fit

SS241.005243 - 003 Off White



Available color


003 Off White

# Bobby MORELLA L30

Article Number: SS241.223091  
Composition: 64% CO, 33% CV, 3% EA

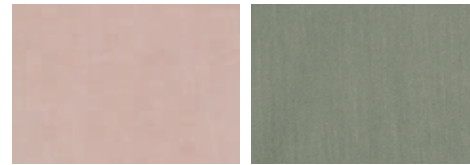
Loose fit



SS241.223091 - 629 Bright Mint



### Available colors



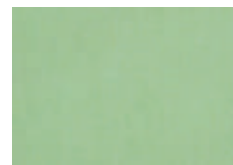
410 Soft Pink

637 Light Olive



441 Sugar Pink

705 Purple



629 Bright Mint

# Bobby CASUAL COTTON L30

Article Number: SS241.207091  
Composition: 97% CO, 3% EA

Loose fit



SS241.207091 - 710 Vivid Violet



### Available colors



301 Navy

425 Fuchsia



314 Royal Blue

628 Bright Green



230 Sand

638 Dark Cyan



401 Red

710 Vivid Violet



# Bobby SPRING STRIPES L30

Article Number: SS241.205091

Composition: Check sales app for composition of each stripe!

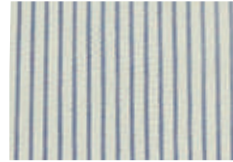
Loose fit



SS241.205091 - 301 Navy



Available colors



301 Navy



410 Soft Pink

# Bobby SPRING PRINTS L30

Article Number: SS241.204091

Composition: 62% CLY, 35% CO, 3% EA

Loose fit



SS241.204091 - P136 Neutral Safari



Available colors



P132 Multi Color Flower



P134 Leafs



P136 Neutral Safari

# Vayen DAILY DENIMS L32

Article Number: SS241.212263

Composition: See sales app for composition and price of each washing!

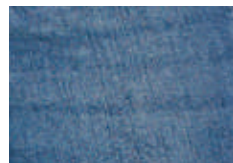
**Straight fit**



SS241.212263 - D127 Clean Light Blue



Available washings



D113 Vintage Stone



D127 Clean Light Blue

# Vayen embroidery DAILY DENIMS L32

Article Number: SS241.212291

Composition: See sales app for composition and price of each washing!

**Straight fit**



SS241.212291 - D135 Used Stone



Available washing



D135 Used Stone



# Vayen MORELLA L32

Article Number: SS241.223263  
Composition: 64% CO, 33% CV, 3% EA

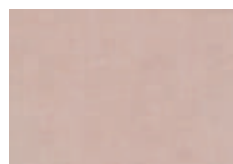
**Straight fit**



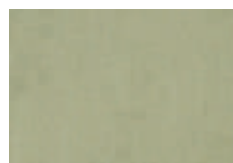
SS241.223263 - 637 Light Olive



**Available colors**



410 Soft Pink



637 Light Olive

# Vera HEAVEN UNI L32

Article Number: SS241.001285  
Composition: 67% CO, 29% PES, 4% EA

**Bootcut fit**



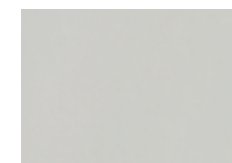
SS241.001285 - 301 Navy



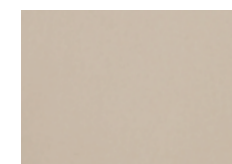
**Available colors**



301 Navy



003 Off White



227 Beige

# Jade DAILY DENIMS L32

Article Number: SS241.212070

Composition: See sales app for composition and price of each washing!

Flare fit



SS241.212070 - P141 Sunflower



### Available washings



D42 Medium Used



D134 Smokey Blue



P141 Sunflower

# Jade COLOR DENIM L32

Article Number: SS241.005070

Composition: 91% CO, 6% PES, 3% EA

Flare fit



SS241.005070 - 003 Off White



### Available colors



002 White



440 Rosebloom



003 Off White



637 Light Olive



439 Bright Coral



# Faye DAILY DENIMS L32

Article Number: SS241.212261

Composition: See sales app for composition and price of each washing!

Extra flare fit



SS241.212261 - D45 Used Grey



Available washing



D45 Used Grey

# Faye welt pocket DAILY DENIMS L32

Article Number: SS241.212287

Composition: See sales app for composition and price of each washing!

Extra flare fit



SS241.212287 - D135 Used Stone



Available washing



D135 Used Stone

# Faye MORELLA L32

Article Number: SS241.223261  
Composition: 64% CO, 33% CV, 3% EA

Extra flare fit



SS241.223261 - 441 Sugar Pink



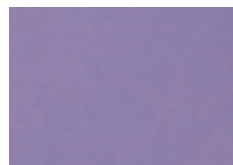
### Available colors



441 Sugar Pink



629 Bright Mint



705 Purple

# Faye SPRING STRIPES L32

Article Number: SS241.205261  
Composition: Check sales app for composition of each stripe!

Extra flare fit



SS241.205261 - 410 Soft Pink



### Available color



410 Soft Pink



# Noa DAILY DENIMS L29

Article Number: SS241.212193

Composition: See sales app for composition and price of each washing!

Kick flare fit



SS241.212193 - D16 Used Light Blue



Available washing



D16 Used Light Blue

# Noa COLOR DENIM L29

Article Number: SS241.005193

Composition: 91% CO, 6% PES, 3% EA

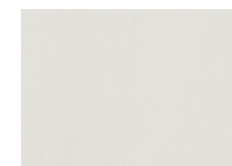
Kick flare fit



SS241.005193 - 002 White



Available colors



002 White

# Mira pocket DAILY DENIMS L32

Article Number: SS241.212290

Composition: See sales app for composition and price of each washing!

Wide leg fit



Washing visible on photo is cancelled - only for style reference.



### Available washings



D42 Medium Used



D134 Smokey Blue



D136 Light Vintage

# Mira elastic TWILL JERSEY L32

Article Number: SS241.220206

Composition: 95% PES, 5% EA

Wide leg fit



SS241.220206 - 443 Coral



### Available colors



003 Off White



443 Coral



# Mira elastic FLOWY PRINTS L32

Article Number: SS241.174206  
Composition: 100% PES

Wide leg fit



SS241.174206 - P138 Multi Color Paisley



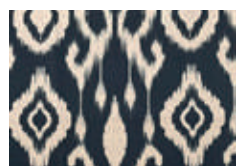
Available colors



P138 Multi Color Paisley



P139 Safari Green



P143 Ethnic Print

# Hannah SUMMER LINEN L32

Article Number: SS241.227018  
Composition: 53% LI, 44% CO, 3% EA

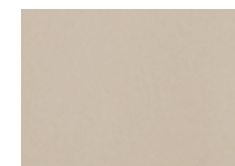
Wide leg fit



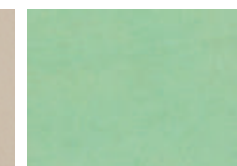
SS241.227018 - 629 Bright Mint



Available colors



227 Beige



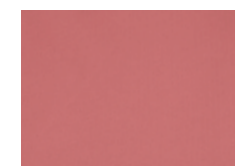
629 Bright Mint



439 Bright Coral



705 Purple



443 Coral



# Hannah PAISLEY LINEN L32

Article Number: SS241.228018  
Composition: 76% CO, 24% LI

Wide leg fit



SS241.228018 - P89 Paisley Beige



Available color



P89 Paisley Beige

# Hannah SPRING FLANELS L32

Article Number: SS241.229018  
Composition: 63% PES, 34% CV, 3% EA

Wide leg fit



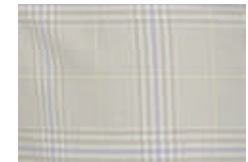
SS241.229018 - P115 Check Pink



Available colors



P115 Check Pink



P140 Check Purple



# Eve DAILY DENIMS L32

Article Number: SS241.212136

Composition: See sales app for composition and price of each washing!



Wide leg fit

SS241.212136 - P142 Oil Print



### Available washings



D16 Used Light Blue



D128 Clean Mid Blue



P142 Oil Print

# Eve pocket COLOR DENIM L32

Article Number: SS241.005281

Composition: 91% CO, 6% PES, 3% EA



Wide leg fit

SS241.005281 - 002 White



### Available colors



002 White



227 Beige



637 Light Olive

# Eve pocket SUMMER LINEN L32

Article Number: SS241.227281  
Composition: 53% LI, 44% CO, 3% EA



Wide leg fit

SS241.227281 - 439 Bright Coral



### Available colors

- 227 Beige
- 629 Bright Mint
- 439 Bright Coral
- 705 Purple
- 443 Coral

# Nova TWILL JERSEY L29

Article Number: SS241.220195  
Composition: 95% PES, 5% EA



Slim chino fit

SS241.220195 - 301 Navy



### Available color

- 301 Navy



# Mae Jacket DAILY DENIMS

Article Number: SS241.212160

Composition: See sales app for composition and price of each washing!



SS241.212160 - D16 Used Light Blue

Specials



Available washing



D16 Used Light Blue

# Mae Fringe Jacket DAILY DENIMS

Article Number: SS241.212292

Composition: See sales app for composition and price of each washing!



SS241.212292 - D135 Used Stone

Specials



Available washing



D135 Used Stone



# Mae Fringe Jacket

COLOR DENIM

Article Number: SS241.005292  
Composition: 91% CO, 6% PES, 3% EA



SS241.005292 - 002 White



### Available colors



002 White



440 Rosebloom



227 Beige



637 Light Olive



439 Bright Coral

Specials

# Mae Jacket

COLOR DENIM

Article Number: SS241.005160  
Composition: 91% CO, 6% PES, 3% EA



SS241.005160 - 002 White



### Available colors



002 White



## A conscious choice

Sustainable business is more than just a trend. Doing business in a socially responsible way, is an important part of the Para Mi business operation. Sustainable business, or corporate social responsibility, can be done in many different ways. Good for the environment, society, people and animals; we cannot ignore it. We find it important and see it as part of our business.



For Para Mi sustainable business means that we choose a combination of four important pillars: we want to 'do good' for people, the environment, society and animals.



## Think about tomorrow

All production partners, with whom we work, have the same aspiration as we do to minimize energy and water consumption. We are constantly looking for and applying energysaving developments.



The laundries where our jeans are washed reuse 75% of the water used in the production process. That's a pretty high percentage. In addition, they make very conscious use of certain chemicals and only use them when necessary. Our fabric suppliers have various ecological and sustainability labels:











[www.para-mi.com](http://www.para-mi.com)

[sales@para-mi.com](mailto:sales@para-mi.com) | [info@para-mi.com](mailto:info@para-mi.com) | 0031 (0)20 811 0334